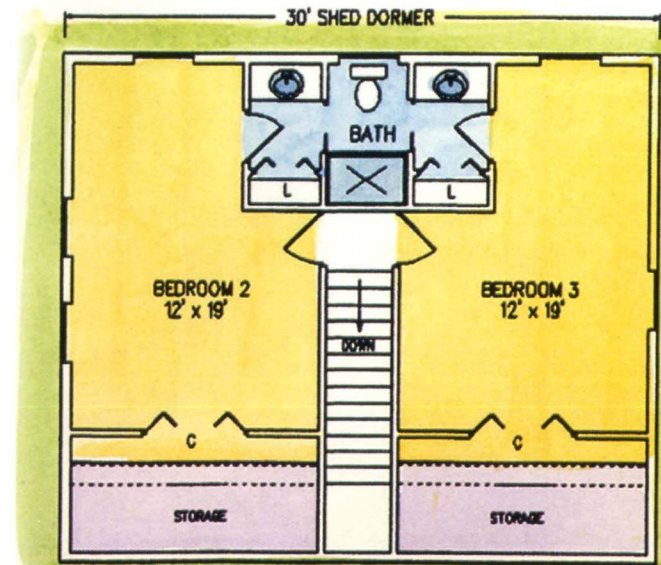
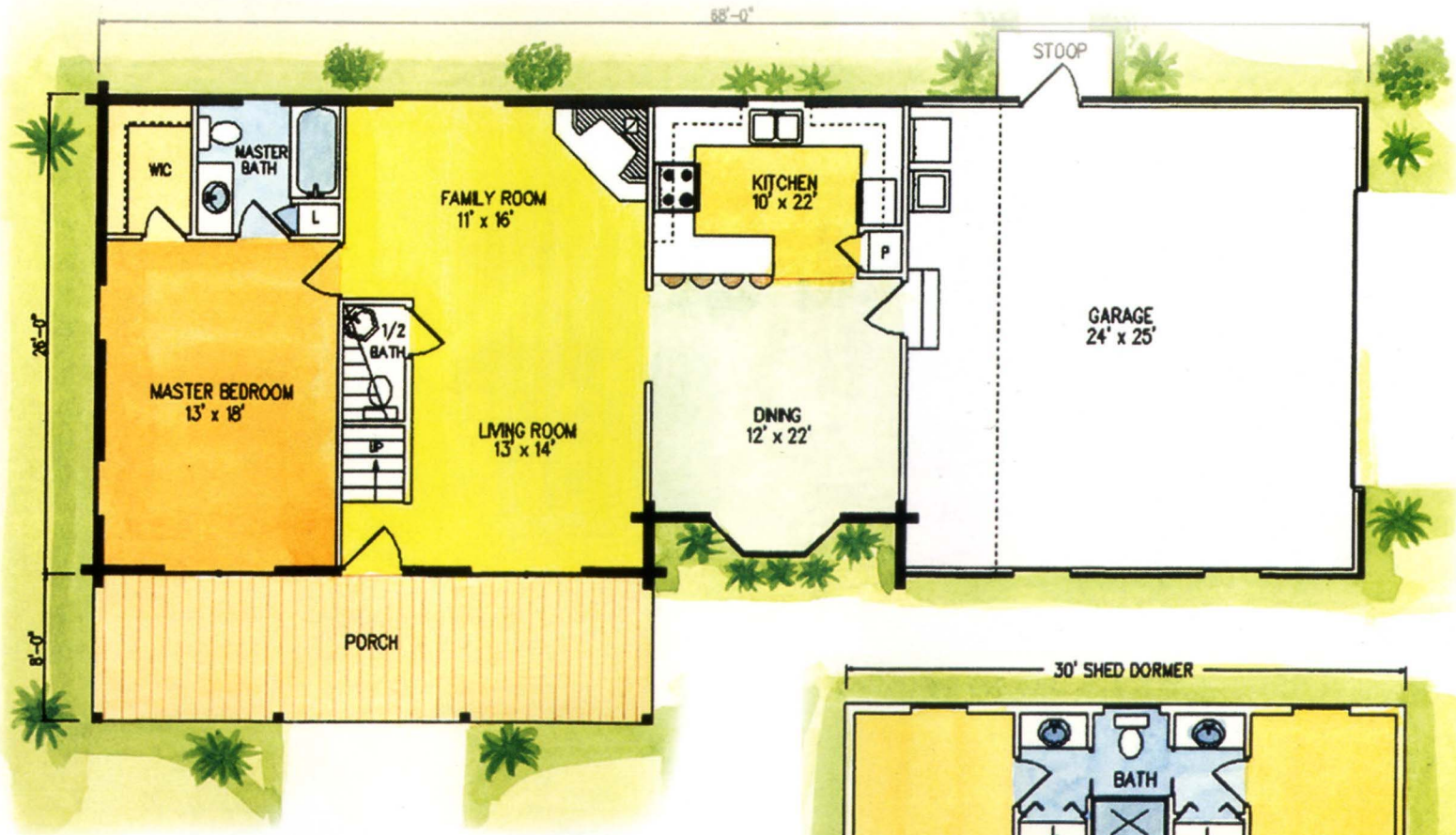


Gull Landing

3 Bedroom - 2 1/2 Bath



First Floor 1088 sq.ft.
Second Floor 741 sq.ft.

TOTAL 1829 sq.ft.
Garage 624 sq.ft.
Porch 240 sq.ft.



BK
Cypress
LOG HOMES

Bronson, FL.
1-800-553-1564
www.bkcypress.com